



Cochrane
Health Equity



Health Equity Thematic Group Open Meeting

September 24, 2025

Agenda

1. Welcome
2. Health Equity Thematic Group – introduction and objectives
3. Small groups
4. Wrap up

Tell us where you're joining from!

- Mark your location on the map



Advisory Group

Chair: Ana Marusic

Members:

Kerry Albright

Antonio Dans

Tamara Kredo

Luis Gabriel Cuervo

Eleanor Ochodo

Mark Petticrew

Puja Kapai Paryani

Pierre Ongolo-Zogo

Gillian Stokes

Victoria Shepherd

Karla Soares-Weiser

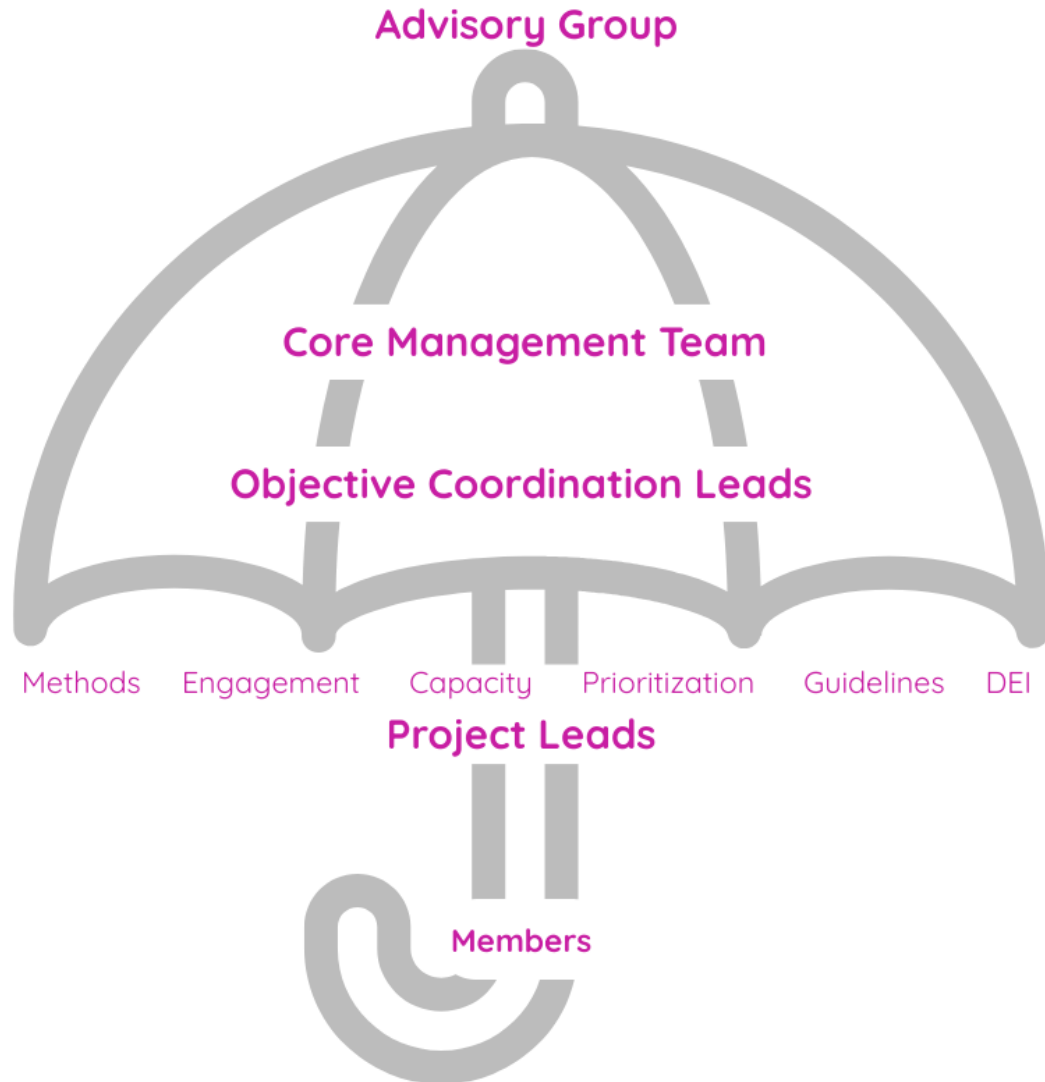
Lawrence Mbuagbaw

Kevin Pottie

Elizabeth Kristjansson

Gabriel Rada

Our structure



Advisory Group

Provide strategic guidance and implementation advice related to the overall direction and goals of the thematic group
Attend quarterly meetings.

Core Management Team

- Oversees all group activities and operations
- Responsible for making key decisions, guiding the organization's policies and procedures, and ensuring its effectiveness

Objective Coordination Leads

Communicate with the project teams within the objective
Work with the other objective coordination leads to identify opportunities for collaboration
Attend regular meetings with the core management team

Project Leads

Leading a project under one of the objectives.

Members

Receive monthly newsletter
Invited to open equity meetings

Cochrane scientific strategy – 2025-2030

- Promoting health equity is a fundamental commitment within Cochrane’s Scientific Strategy



What is the Scientific Strategy?

Our vision: Building a healthier, more equitable world

- Trusted evidence for those who need it most
- A bold response to today’s most urgent health challenges
- Designed to bridge the evidence gap and reduce health inequities
- Central to delivering Cochrane’s organisational goals



Health Equity Thematic Group Objectives

1. Promote equity in the health evidence base.
2. Ensure equitable processes for engagement.
3. Strengthen capacity for equity design, analysis, and reporting.
4. Produce high-priority, equity-focused evidence syntheses.
5. Promote equity in implementation tools.
6. Supporting DEI within Cochrane

Objective 1 (Methods): Promote equity in the health evidence base

Providing tools, methods, and support to increase equity in observational studies, randomized trials, and systematic reviews

e.g.

STROBE Equity: [Improving the Reporting on Health Equity in Observational Research \(STROBE-Equity\): Extension Checklist and Elaboration](#)

Cochrane methods support and peer review

Objective 2 (Engagement): Ensure equitable processes for engagement

Robust, inclusive engagement for evidence synthesis and guideline development to promote equity

MuSE: Engagement in guidelines

The GIN-McMaster Guideline Development Checklist Extension for Engagement

MuSE: Evidence Synthesis

Guidance for engaging with multiple interest-holders in evidence syntheses

Objective 3 (Capacity): Strengthen capacity for equity design, analysis, and reporting.

Creating formal and informal partnerships to increase awareness. Includes training author teams and evidence synthesis units in equity analysis

e.g. – Cochrane Evidence Synthesis and Methods Tutorials

- International Society for Evidence-based Science (SES), Lanzhou University, China and the International Centre for Evaluation and development (ICED)

Equity heading in Cochrane reviews – tutorials finished; future work on implementation

Objective 3 (Capacity): Strengthen capacity for equity design, analysis, and reporting.

Workshops conducted

- Evidence to Action Conference 2025, Accra, Ghana (Emerging trends in Evidence Synthesis)
- Cochrane Affiliate Centre: Indian Council of Medical Research, New Delhi, India (Equity in Evidence and Gap Maps)
- World Health Summit (WHS), India-Economic Insights and Health Equity: Fostering Resilience in Vulnerable Populations
- Centre for Evidence Based Social Sciences, Lanzhou University-Risk of Bias in Evaluation and Evidence Synthesis

Objective 4 (Prioritization): Produce high-priority equity-focused evidence synthesis

Priority setting for equity analysis and conducting equity-focused evidence synthesis

e.g. – Evidence for Equity (E4E); plain language summaries of equity considerations in arthritis SR (funded by CIHR)

- Expanding equity methods to include commercial and corporate determinants of health: DeMoCraCIES - Develop Methods to Consider Commercial Involvement in Evidence Synthesis (funded by UK MRC)

Objective 5 (Guidelines): Promote equity in implementation tools

Ensuring guidelines consider equity including:

- evaluating equity analysis in clinical practice guidelines/ critical appraisal
- developing guidance for incorporating equity in clinical practice guidelines
- updating checklists for guideline development
- engaging interest-holders in guideline development.

e.g. – Equity in CAN-PCC guidelines (holistic incorporation of equity in the guideline and equity oversight committee; recently completed, <https://canpcc.ca/home/>)

Objective 6 (DEI): Support DEI within Cochrane

Project ideas

- EDI Mentorship program (virtual globally, in person where possible)
- Online Internship program for students (globally)
- Equity in Evidence Synthesis resources: standards, frameworks and templates
- DEI awareness and training workshops
- Identify and make a list of support networks/patient groups/equity sensitive groups
- Integrate EDI in priority setting exercises

New Priority projects

- Guidance for Intersectionality in reviews (Methods)
- Guidance for how to include equity in living systematic reviews (Methods)
- EDI Mentorship program (virtual globally, in person where possible) (Capacity; DEI)
- Updating Cochrane reviews with an equity lens (Prioritization)
- Scoping review to address the SDH (Prioritization)
- Guidance for equitable engagement of interest-holders in research (Engagement)
- Match-making: create a pool of ‘research-ready’ interest-holders who can be linked to research projects and guidelines (Engagement)

Small Groups

- Choose an objective that you would like to discuss.
- If you don't know how to select a group, use the chat to tell us which objective you're most interested in and we can help move you to that discussion.

Methods

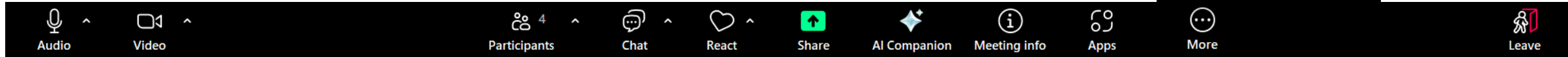
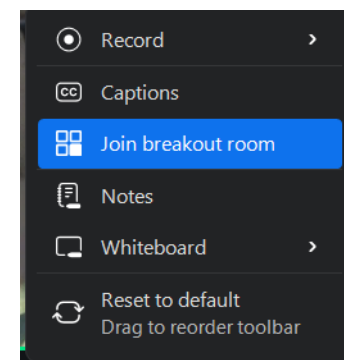
Capacity

Guidelines

Engagement

Prioritization

DEI



- From the highlighted projects, choose your favourite (just to get everybody talking/participating).
- Do you have a project you are leading or contributing to that could be relevant for this goal?
 - Can we support/assist as a group?
 - We can look for other contributors
 - Provide methods support
 - Other?
- Would you like to get involved in one of the projects? Which one and with which role?
 - What would be best to keep you engaged?
 - Monthly meetings?
 - Bi-annual meetings to catch-up?
 - Other?
- Do you think something missing? Other ideas?
 - If yes, think of people that could lead it.

Ways to get involved

- Monthly newsletter
- Sign up sheets

<https://forms.gle/3oDks3A8auQZ6W7A6>

- Open methods Q&As
- Want to contribute but don't know how/which objective? Send us your idea and cv and we can add it to the list



Cochrane
Health Equity

Trusted evidence. Informed decisions. **Better health.**

August 2025

BHRI redesignated as PAHO/WHO Collaborating Centre!



Santé Bruyère
Institut de recherche

Bruyère Health
Research Institute



PAHO/WHO Collaborating Centre for Research Translation and Health Services
Pan American Health Organization
Collaborating Centre of the WHO
Centre collaborateur de l'OPS/OMS pour la recherche et les services de santé
Los organismos de la salud deben trabajar de forma conjunta para mejorar la salud

Bruyère Health Research Institute designated as PAHO/WHO Collaborating Centre and inaugural member of WHO Health Inequality Monitoring Network

Under the leadership of co-directors **Janet Hatcher Roberts** and **Dr. Peter Tugwell**, the Bruyère Health Research Institute (BHRI) has been redesignated as a Pan American Health Organization / World Health Organization Collaborating Centre and selected as a

Contact us



Coordinator: Jennifer Jennifer.Petkovic@uottawa.ca

Objective coordination co-leads:

1. Methods: Jennifer Jennifer.Petkovic@uottawa.ca
2. Engagement: Olivia omagwood@bruyere.org and Joanne jk81@aub.edu.lb
3. Capacity: Ashrita asaran@campbellsouthasia.org
4. Prioritization: Lara lmaxwell@uottawa.ca and Roses rparker@cochrane.org
5. Guidelines: Jordi jpardo@uottawa.ca and Andrea darzia@mcmaster.ca
6. DEI: Tamara tlotfi@3ieimpact.org