

LSR Methods Symposium

The ASH Cochrane LSR pilot

Elie Akl

American University of Beirut,
Lebanon



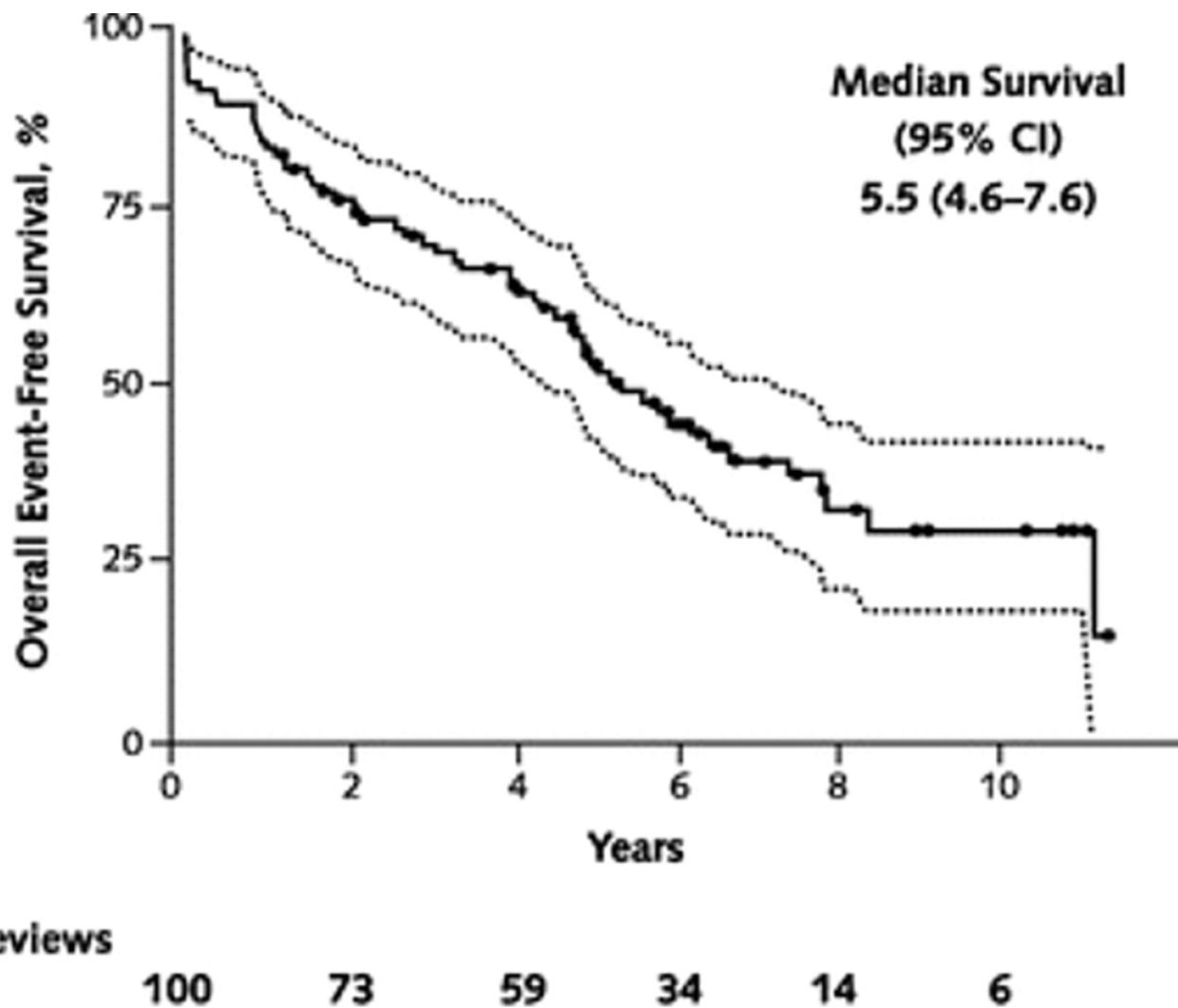
Clinical practice guidelines

“Clinical practice guidelines are statements that include recommendations intended to optimize patient care that are informed by a **systematic review** of evidence and an assessment of the benefits and harms of alternative care options”

IOM: Clinical Practice Guidelines We Can Trust

From: How Quickly Do Systematic Reviews Go Out of Date? A Survival Analysis

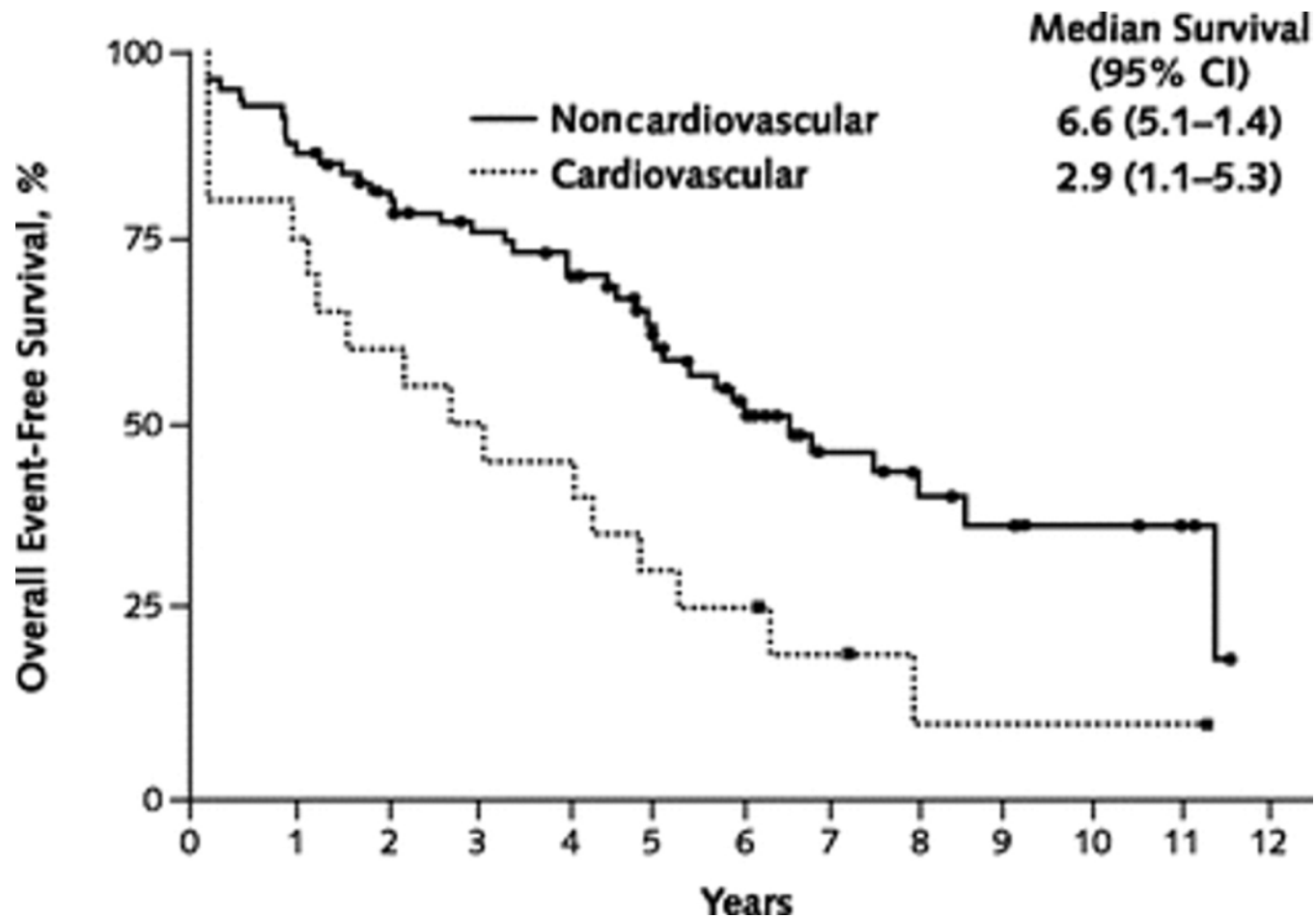
Ann Intern Med. 2007;147(4):224-233. doi:10.7326/0003-4819-147-4-200708210-00179



Systematic reviews
at risk, *n*

From: How Quickly Do Systematic Reviews Go Out of Date? A Survival Analysis

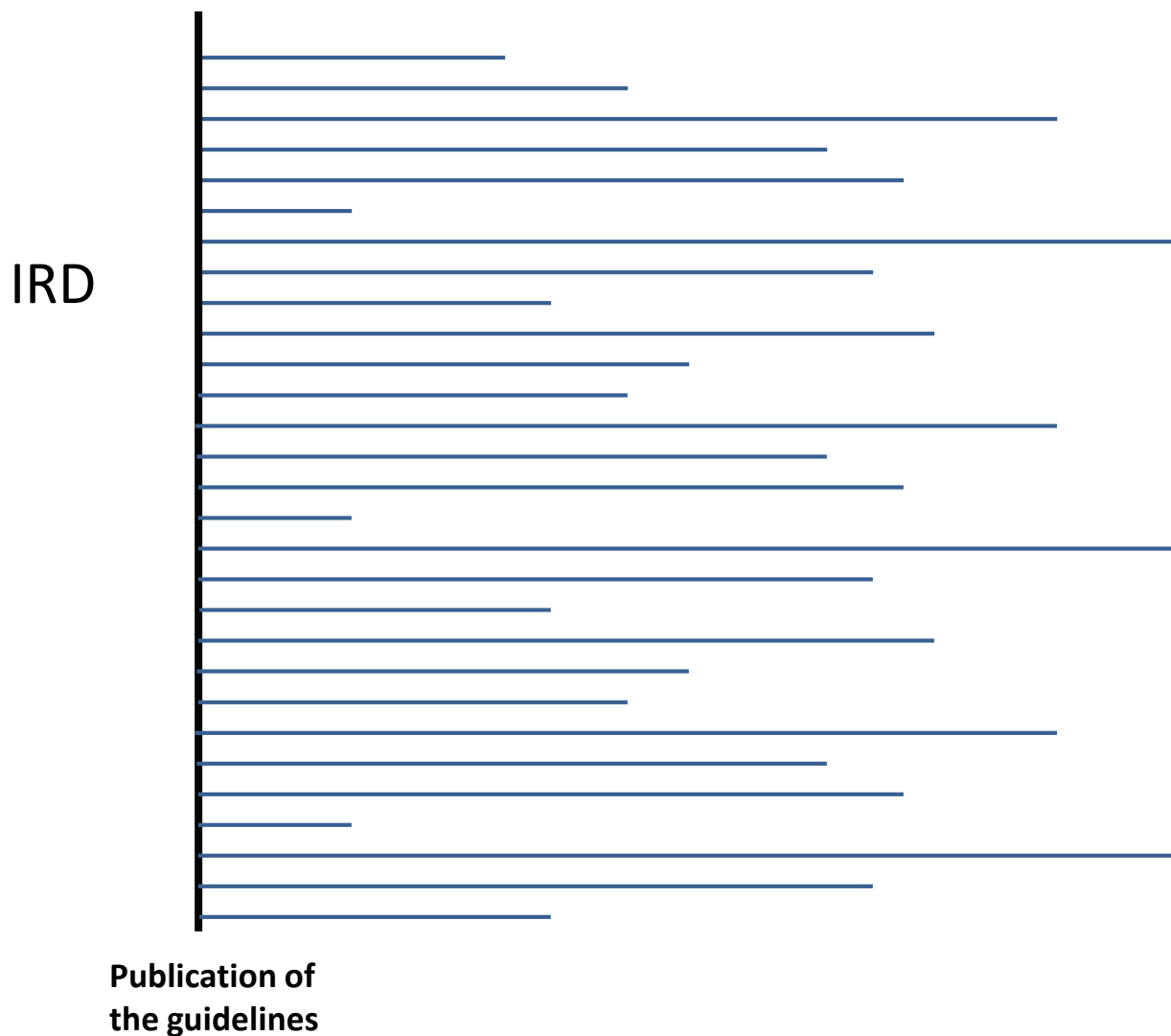
Ann Intern Med. 2007;147(4):224-233. doi:10.7326/0003-4819-147-4-200708210-00179



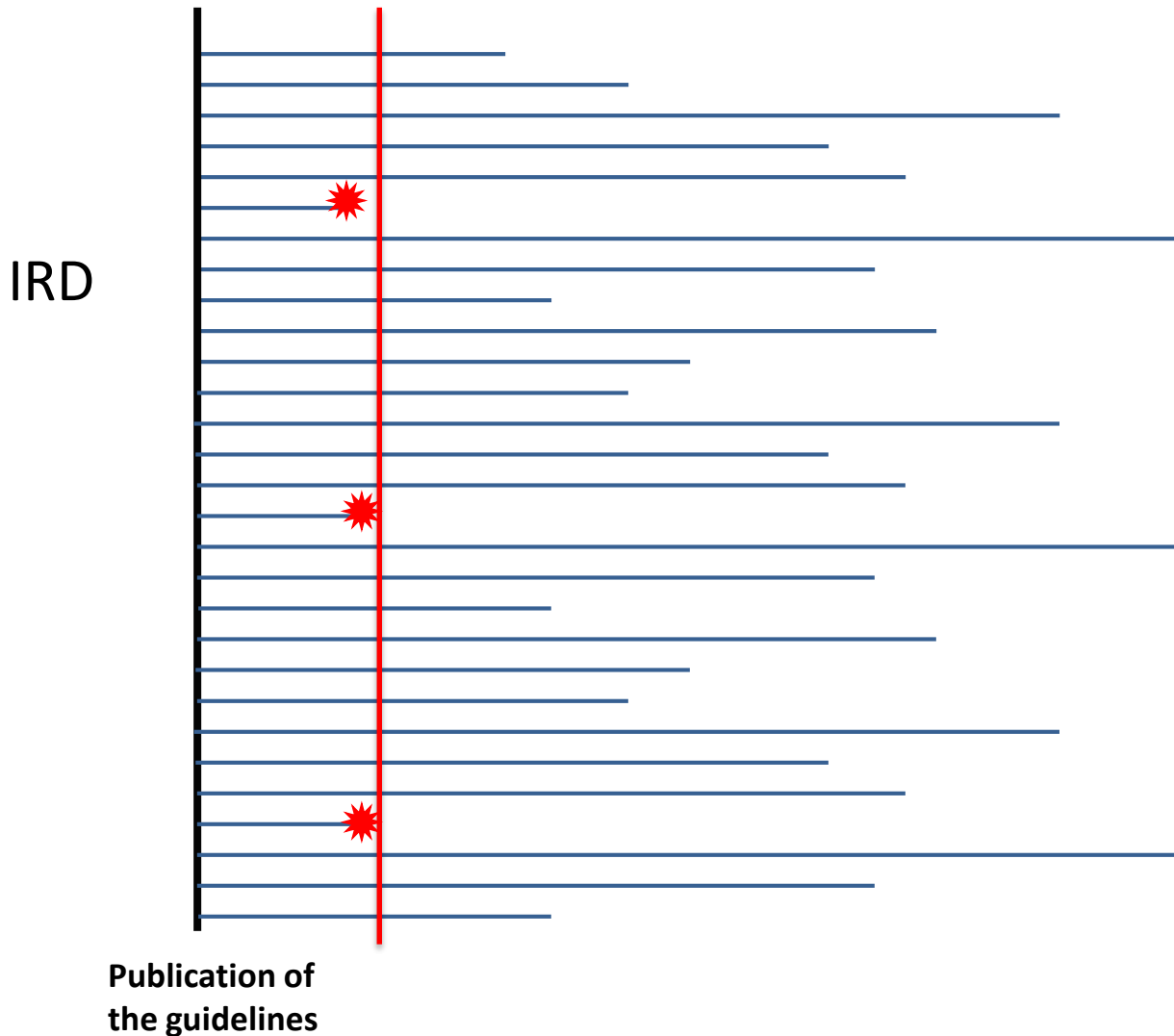
Clinical practice guidelines

- Recommendations get outdated at variables rates
- Some are already outdated by the time of publication

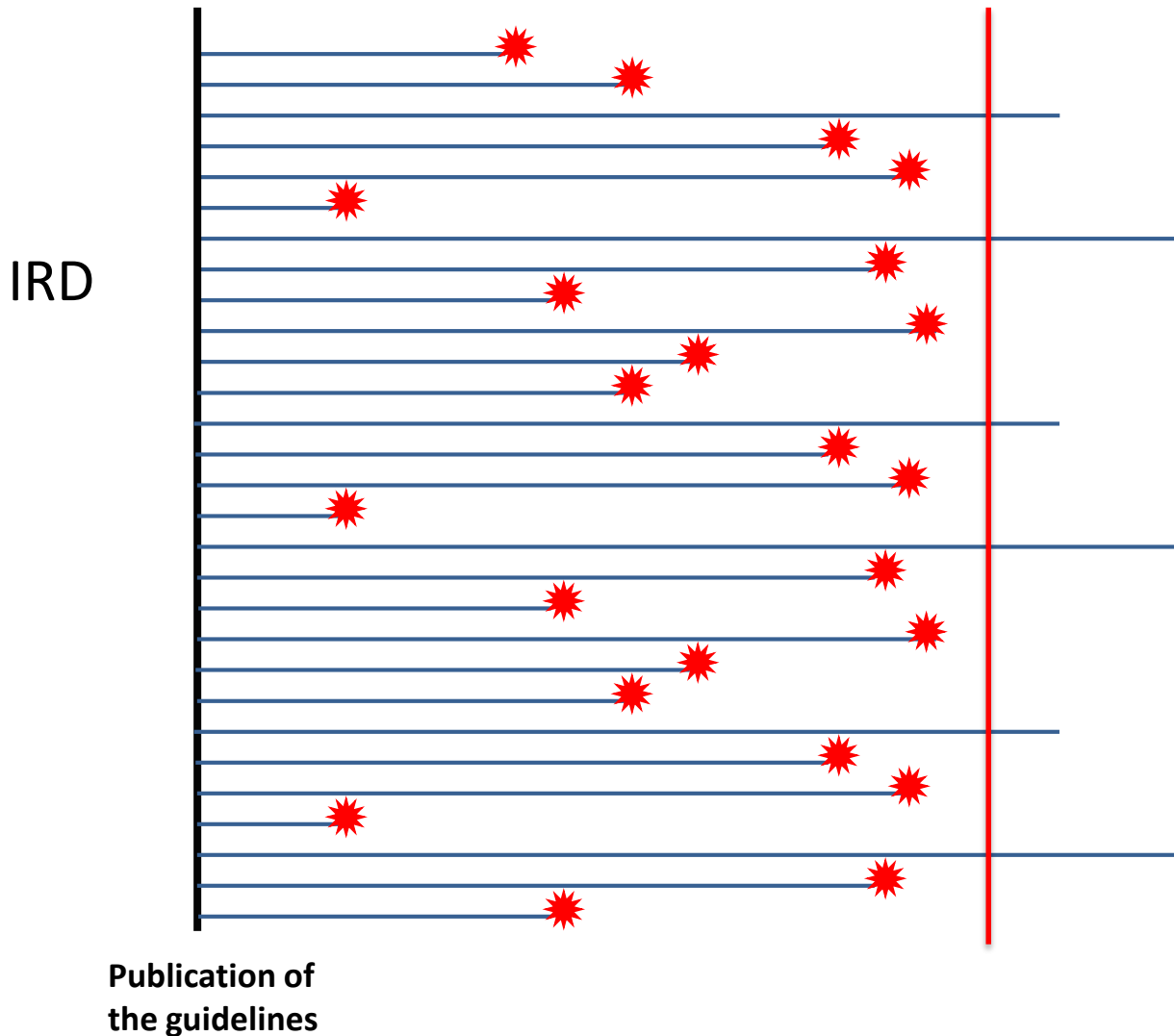
When to update the guidelines?



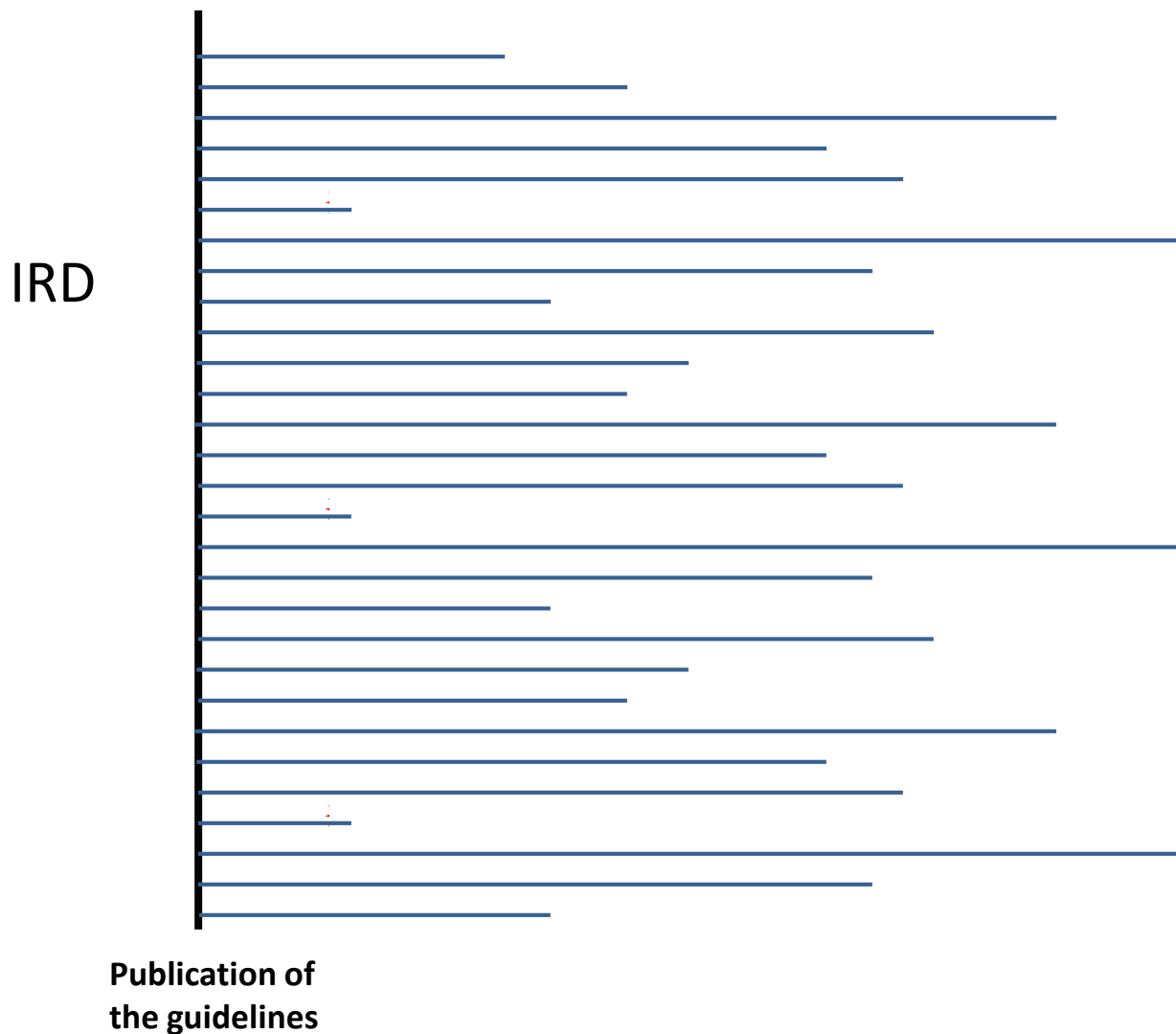
When to update the guidelines?



When to update the guidelines?



When to update the guidelines?



When to update the guidelines?

- The appropriate question is: when to update the recommendation?
- The appropriate answer: as soon as new impactful evidence becomes available for that recommendation

Living guidelines

- Develop the “base” guidelines (i.e., all recommendations)
- As soon as “base” guidelines are produced
 - Switch to the living mode
 - The unit of update is the recommendation

Living guidelines

- ASH-McMaster Clinical Practice Guidelines on Venous Thromboembolism
- >200 recommendations
 1. Prevention of VTE in Surgical Hospitalized Patients
 2. Prevention of VTE in Medical Hospitalized Patients
 3. Treatment of Acute VTE
 4. Optimal Management of Anticoagulation Therapy
 5. Prevention and Treatment of VTE in Patients with Cancer
 6. Heparin-Induced Thrombocytopenia
 7. Thrombophilia
 8. Pediatric VTE
 9. VTE in the Context of Pregnancy
 10. Diagnosis of VTE

Living guidelines

- ASH-McMaster Clinical Practice Guidelines on Venous Thromboembolism
- >200 recommendations
 1. Prevention of VTE in Surgical Hospitalized Patients
 2. Prevention of VTE in Medical Hospitalized Patients
 3. Treatment of Acute VTE
 4. Optimal Management of Anticoagulation Therapy
 5. Prevention and Treatment of VTE in Patients with Cancer
 6. Heparin-Induced Thrombocytopenia
 7. Thrombophilia
 8. Pediatric VTE
 9. VTE in the Context of Pregnancy
 10. Diagnosis of VTE

Living guidelines

- ASH-McMaster Clinical Practice Guidelines on Venous Thromboembolism
 - Cancer chapter: about 20 recommendations
 - “Base” recommendations to be completed in early 2017
 - At that time, the living mode would be switched ON

Requirements of Living guidelines

- Living guidelines require:
 - Living systematic reviews

AND

- Living Evidence Profile
- Living Evidence to Decision (EtD) Table
- Living panel
- Living peer review process
- Living publication process
- Living coordination process
- Living budget

Challenges of Living guidelines

- Living guidelines require:
 - Living systematic reviews

AND

- Living Evidence Profile
- Living Evidence to Decision (EtD) Table
- Living panel
- Living peer review process
- Living publication process
- Living coordination process
- Living budget

Thank you!

- Questions?