

Research priority setting in health services research

PenCLAHRC

(Peninsula Collaboration for Leadership
in Applied Health Research and Care)

Rebecca.whear@pms.ac.uk



Objective

- To share PenCLAHRCs experience of priority setting

Whear, R., Thompson-Coon, J., Boddy, K., Papworth, H., Frier, J. And Stein, K.
Establishing local priorities for a health research agenda. (under review)
Health Expectations.

- How PenCLAHRC began
- Who is involved
- Describe the process
- Successes and challenges
- Questions/discussion afterwards

What is PenCLAHRC?



Report of the High Level Group
on Clinical Effectiveness

Chaired by Professor Sir John Tooke

A report to Sir Liam Donaldson
Chief Medical Officer

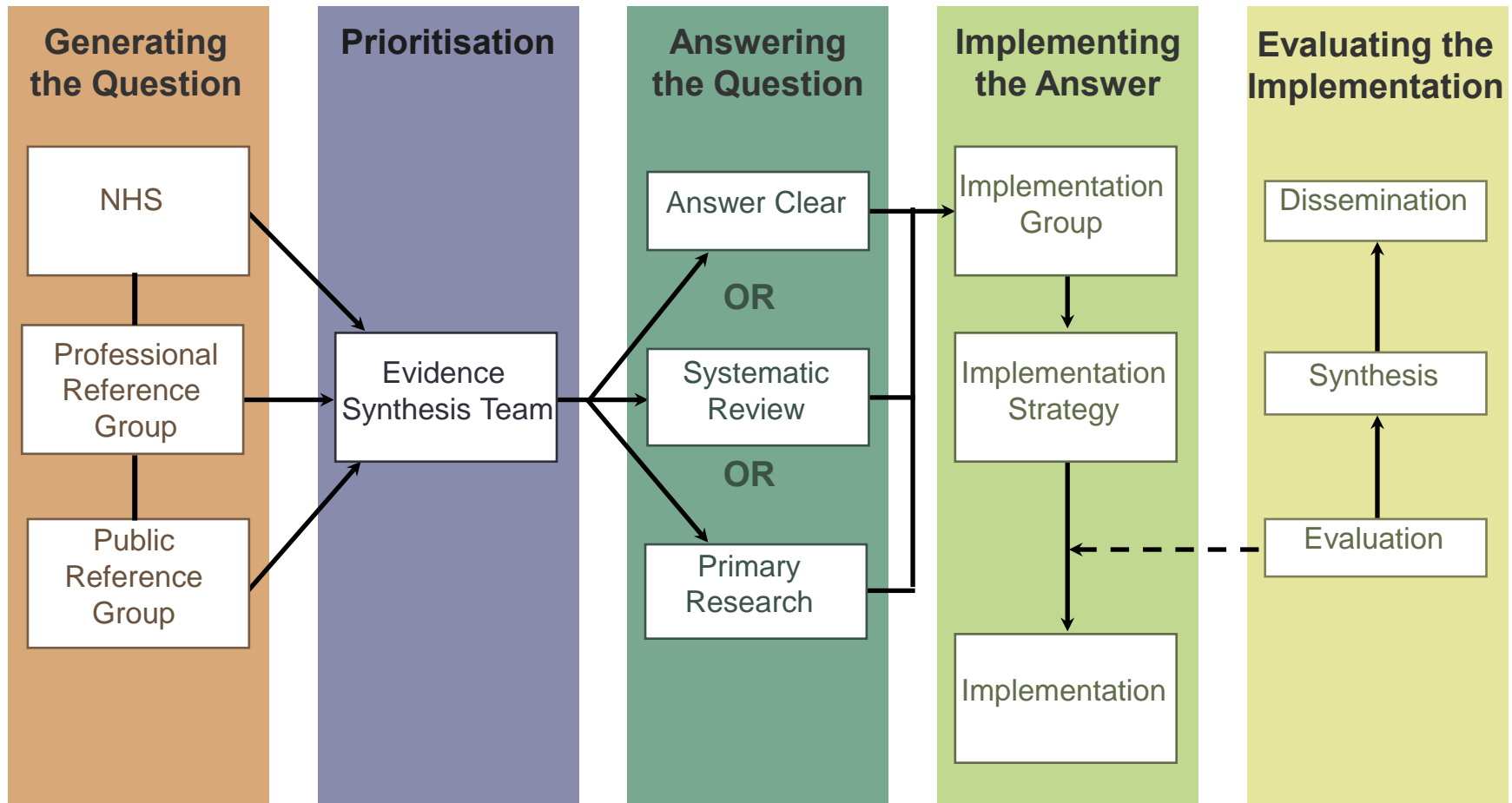
Aims

- To further embed partnership between the NHS and academia
- To promote engagement and involvement from clinicians and service users

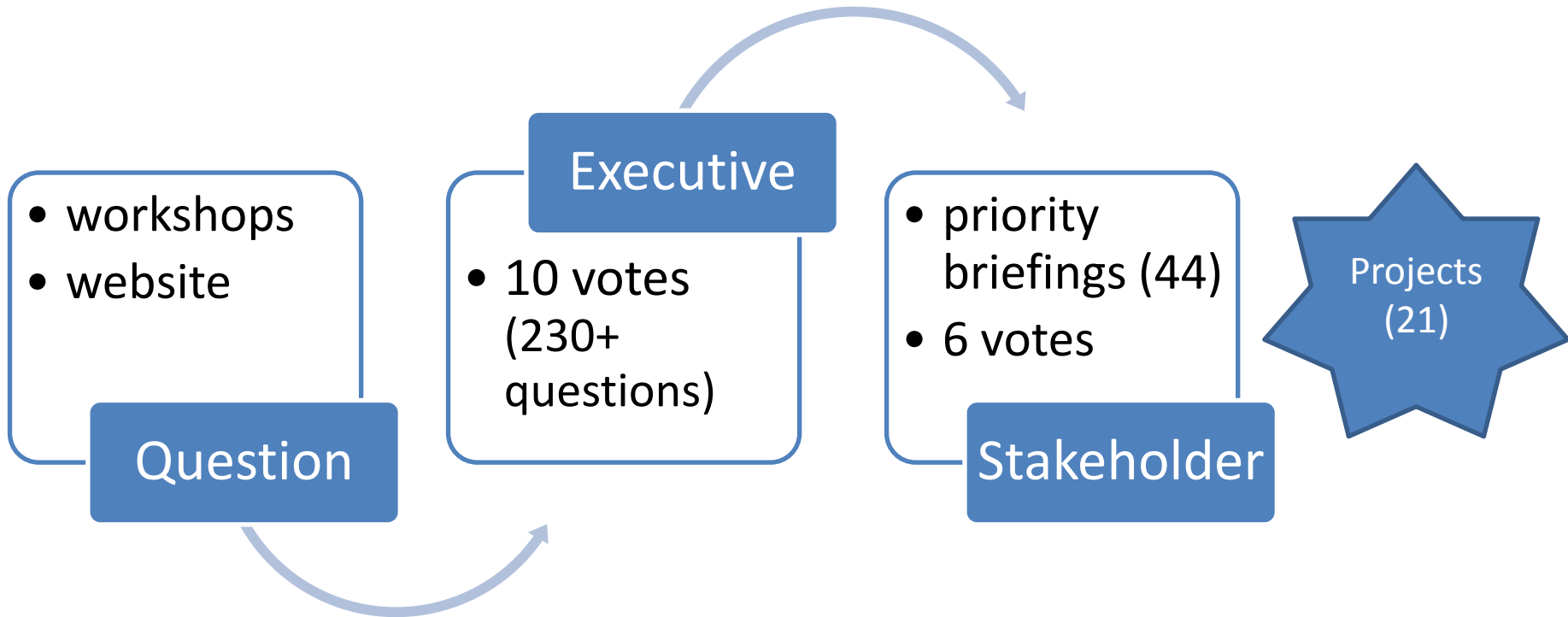
Who?

- Medical School
- Two universities (Plymouth and Exeter)
- 5 acute hospitals (North Devon HT, Plymouth Hospitals Trust, Royal Cornwall Hospital Trust, South Devon HFT, Royal Devon and Exeter HFT)
- 4 primary care trusts (NHS Southwest, Devon, Cornwall and Isles of Scilly, and Plymouth)
- 3 mental health providers (Cornwall Partnership Foundation Trust, Devon Partnership NHS Trust, Torbay Care Trust)
- South West Ambulance Service NHS FT

How does it work?



Process



9 months from question submission to Stakeholder decision

Prioritisation criteria

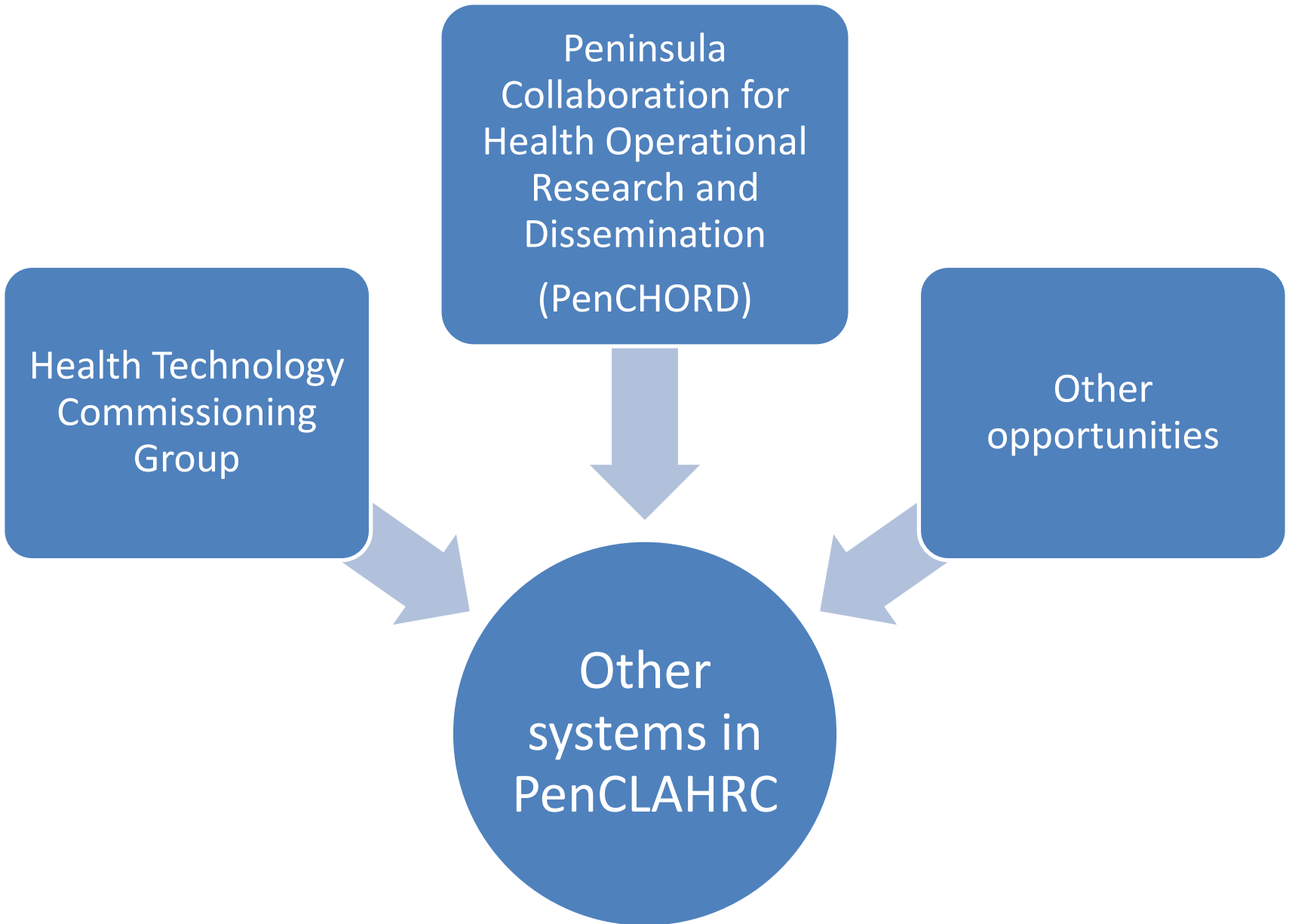
- The size of the health problem
- The potential for health improvement
- The feasibility of the question
- Whether the south west is a good place to do the research
- Alignment with priorities set by the NHS

Successes

- Stakeholder agreement
- Collaboration
- Outputs – grant funding
 - publications
 - primary research
 - training
- Engagement

Challenges

- Geography
- Initial clinician engagement
- Technical difficulties with the webtool
- Detailed feedback



Health Technology
Commissioning
Group

Peninsula
Collaboration for
Health Operational
Research and
Dissemination
(PenCHORD)

Other
opportunities

Other
systems in
PenCLAHRC

Round-up

- Some success in engaging a wide variety of stakeholders
- Collaboration on projects has been good
- Priority setting method seems acceptable

PenCLAHRC Evidence Synthesis Team:

- Ken Stein, Jo Thompson-Coon, Rebecca Abbott,
Rebecca Whear, Alison Bethel and Morwenna Rogers

<http://clahrc-peninsula.nihr.ac.uk/>

Whear, R., Thompson-Coon, J., Boddy, K., Papworth, H., Frier, J. And Stein, K.
Establishing local priorities for a health research agenda. (under review)
Health Expectations.

Rebecca.whear@pms.ac.uk

